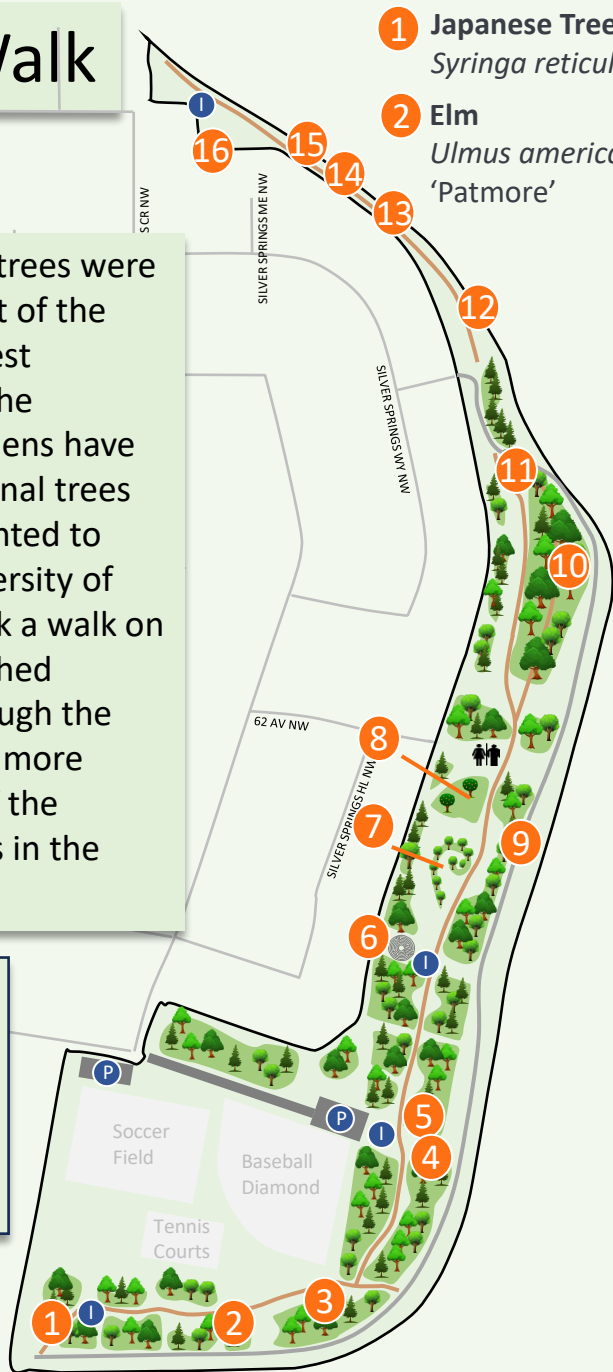


# Tree Walk

In 2002, 7000 trees were planted as part of the Birthplace forest initiative. As the Botanical Gardens have grown, additional trees have been planted to add to the diversity of the forest. Talk a walk on 1.7km of mulched pathways through the forest to learn more about some of the unique species in the gardens.

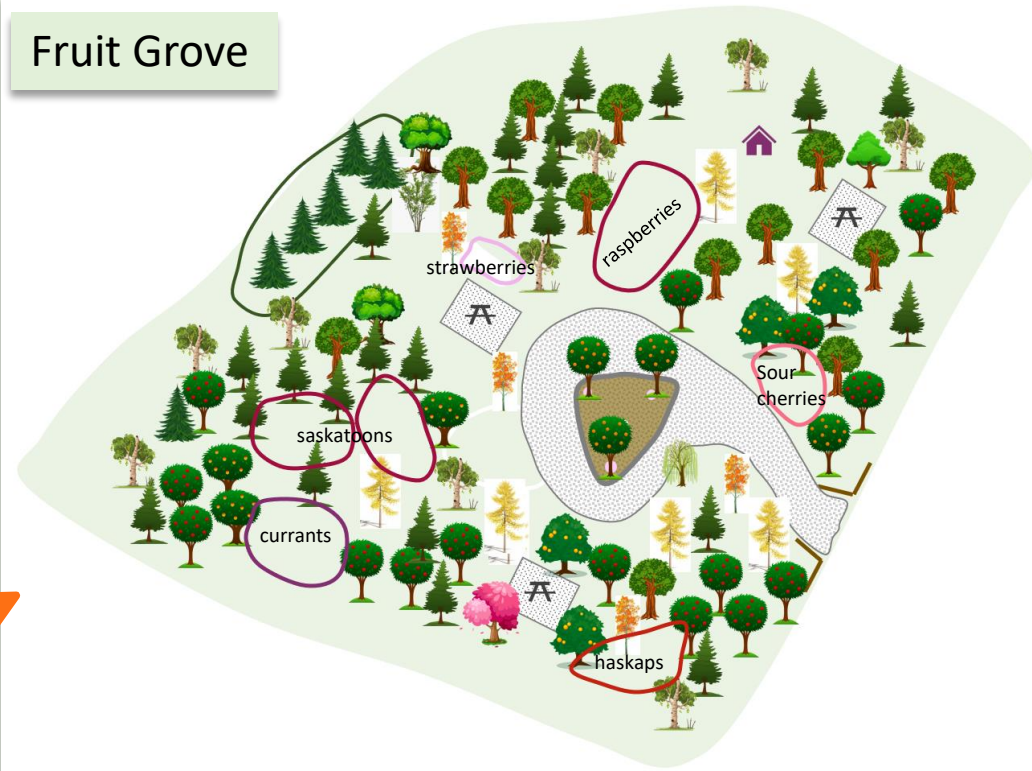










Scan the QR code to follow the tree walk on your mobile device



- 1 **Japanese Tree Lilac**  
*Syringa reticulata* 'Ivory Silk'
- 2 **Elm**  
*Ulmus americana* 'Patmore'
- 3 **Russian Mountain Ash**  
*Sorbus aucuparia* 'Rossica'
- 4 **Plum varieties**  
*Prunus x nigrella* 'Muckle'  
*Prunus nigra* 'Princess Kay'
- 5 **Ponderosa Pine**  
*Pinus ponderosa*
- 6 **Maple varieties**  
*Acer rubrum* 'Northwood'  
*Acer ginnala*
- 7 **Columnar Aspen**  
*Populus tremula* 'Erecta'
- 8 **Fruit Grove**
- 9 **Ohio Buckeye**  
*Aesculus glabra*
- 10 **European Mountain Pine**  
*Pinus uncinata*
- 11 **Sea Buckthorn**  
*Hippophae rhamnoides*
- 12 **Espalier - Norland Apple**  
*Malus* 'Norland'
- 13 **Toba Hawthorn**  
*Crataegus x mordenensis* 'Toba'
- 14 **Paper Birch**  
*Betula papyrifera*
- 15 **European Mountain Ash**  
*Sorbus aucuparia*
- 16 **Evans Cherry**  
*Prunus cerasus* 'Evans'

# Fruit Grove



-  **Gladiator Crabapple**  
*Malus x adstringens* 'Durleo'
-  **Sour Cherries**  
*Prunus* sp.
-  **Ure Pear**  
*Pyrus ussuriensis*
-  **Pembina Plum**  
*Prunus* 'Pembina'
-  **Bristlecone Pine**  
*Pinus aristata*
-  **Apricot**  
*Prunus* sp.
-  **Apple**  
*Malus* sp.
-  **Siberian Larch**  
*Larix siberica*

The Fruit Grove is a place to relax and taste the numerous edible species that grow in Calgary. 29 species of fruit trees and shrubs can be found here, including apples, pears, apricots, cherries, haskaps, raspberries, saskatoons, currants, strawberries, and plums.